

GenView

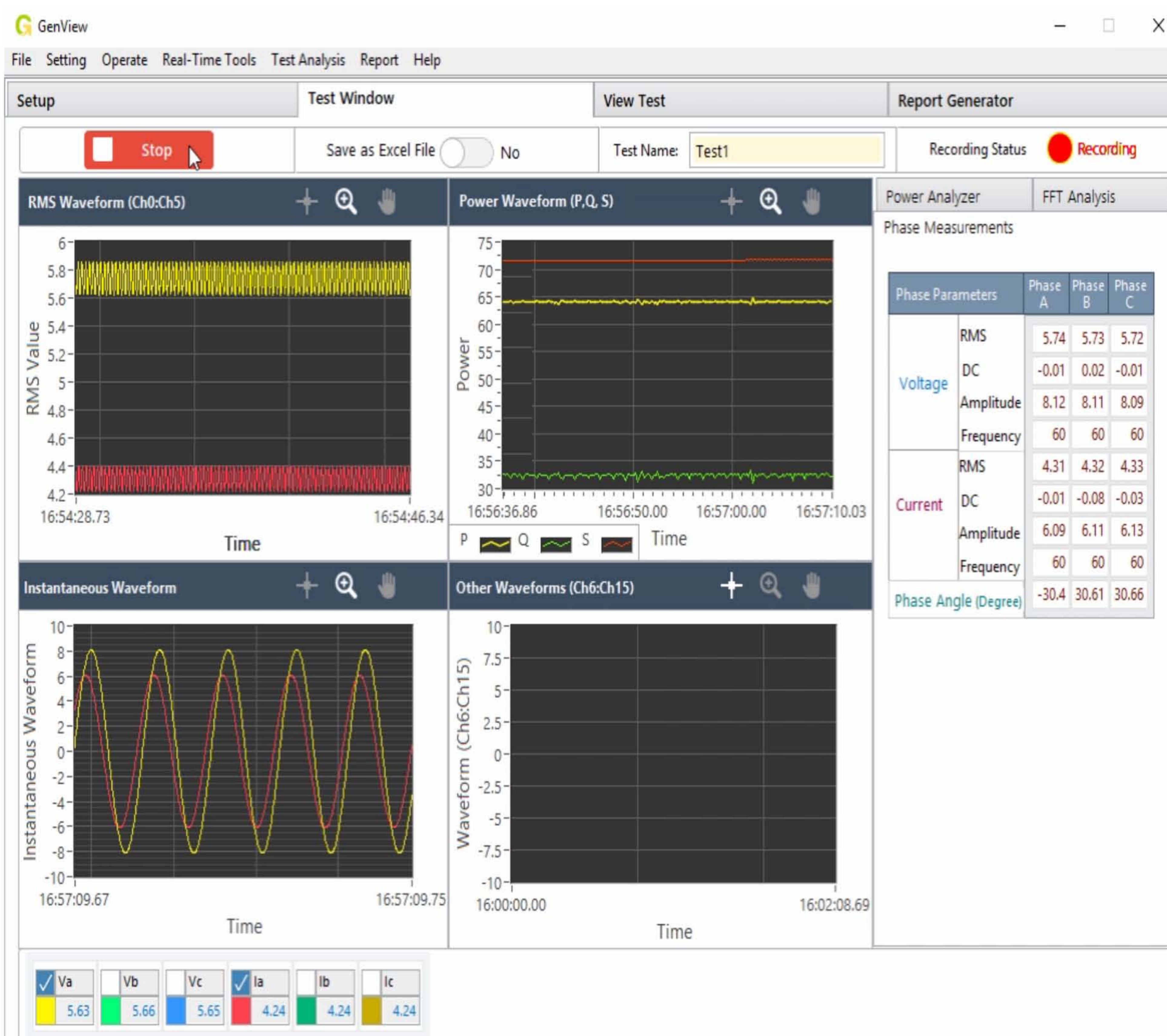
The *GenView* developed by *Power Grid Innovations* is a powerful data acquisition system built up on National Instruments' virtual instrument technology with specially-made signal conditioning hardware for electric power industry and utilities. The most powerful and key component of the system is the powerful software: a suite of advanced user written programs developed for electrical utility applications such as generator transient performance evaluation, equipment bench testing, and advanced power quality analysis.

The *GenView* software offers an in-built user interface that allows the user to record test signals (Voltage, Current, and Frequency etc) for further analysis, while viewing the live signals in real-time. The recording of the signals can also be triggered automatically by user-defined events for capturing abnormal operating conditions of the equipment/system under test.

Our measurement tool is widely used for conventional generator and renewable energy plant testing and model validations.

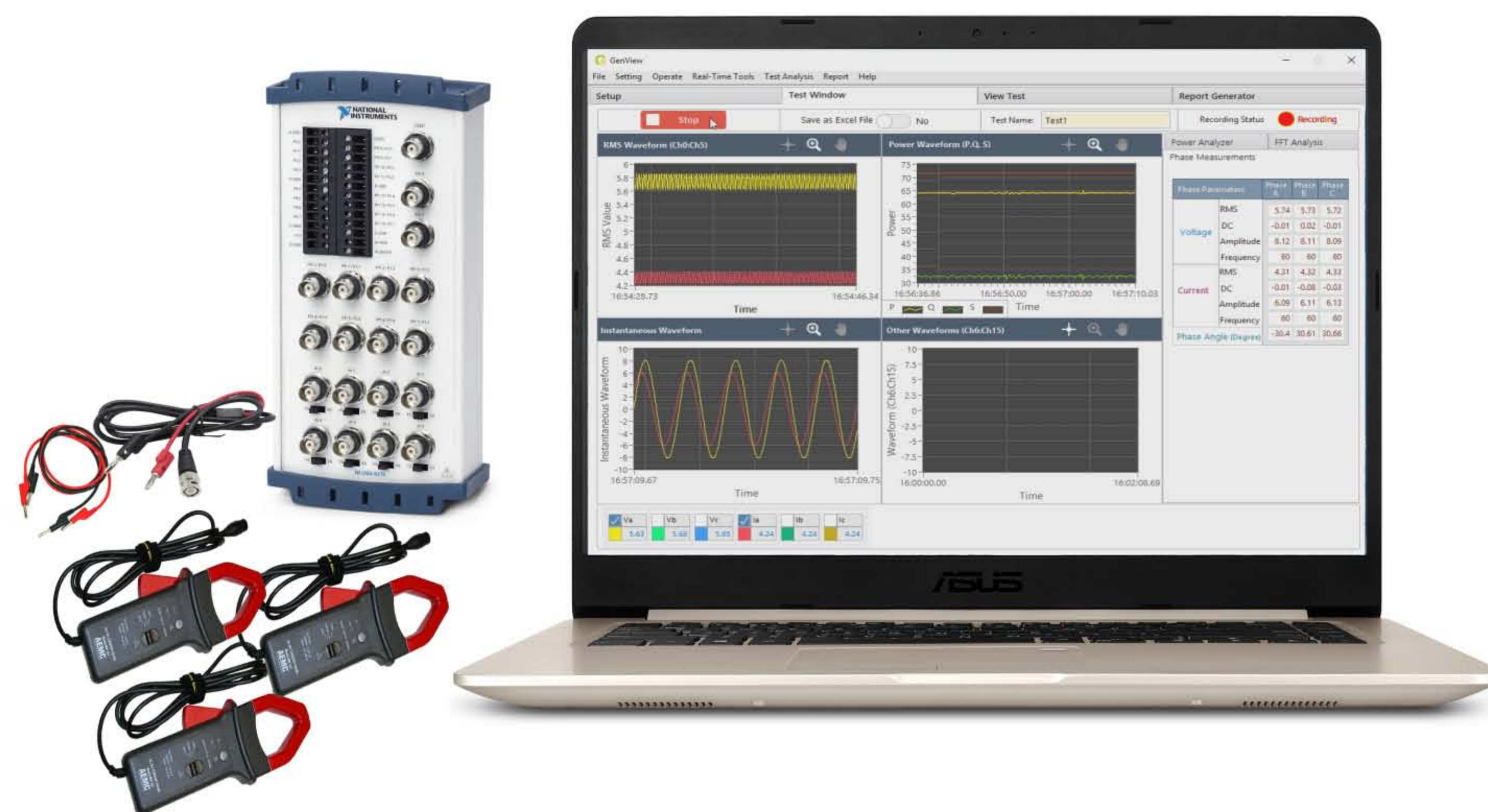
The *GenView* hardware is based on National Instruments' USB DAQ product, which allows the acquisition of multiple channels of data at 16-bit resolution up to 400 kHz.

The *Standard* version of *GenView* includes real-time recording, measurement playback, report generation whereas the *Premium* version comes with all features of Standard plus remote control, online model validation, signal generator module.



Software Features

- Continuous hard disk recording for long duration
- Online monitoring of waveform, calculated powers, RMS values, phase angle, Frequency, etc.
- Instantaneous zoom options for all waveforms
- Easy setup of channels setting with custom options for input/output ratio, offset and labels
- Online harmonics analysis for different channels
- Playback and analysis of recorded waveforms with extensive analytical tools
- Export calculated quantities to a Excel spreadsheet for plotting or further analysis
- Records measurements data in different format (TDMS, EXCEL, CSV and COMTRADE)
- Export waveforms as image
- Connectivity capability to model validation software by PGI (External software needs to be installed)
- Upload measurements data on secure cloud drive
- Remote monitoring and control
- Capable to be linked with online model validation software by PGI
- Transfer Data via Email
- Custom signal generator for different test applications



Hardware Features

- ➔ National Instruments Data Acquisition Card
- ➔ Voltage Measurements upto 600 V
- ➔ Fast AC/DC Current Probes, upto 100 A RMS
- ➔ 16 Analog-to-Digital inputs (ADC Channels) with 16 bits resolutions, upto 400 kS/s sampling Rate
- ➔ 2 Digital to Analog Output (DAC Channels) with 16 bits resolutions, upto 250 kS/s sampling rate
- ➔ Closed loop voltage transducer with excellent accuracy and high bandwidth
- ➔ Isolating Amplifier for Rejecting noises, harmonics and ground effects
- ➔ Anti-aliasing filters to avoid aliasing signals
- ➔ Protection circuit to avoid any damage to other devices
- ➔ BNC connection and easy cabling
- ➔ USB Data Transfer

Applications

- ☑ Generator Testing for Model Development or Performance Evaluation
- ☑ Advanced Power Quality Monitoring and Analysis
- ☑ IEC Compliant Voltage Flicker Measurement and Analysis
- ☑ Renewable Energy Model Validation
- ☑ Power System Troubleshooting